



## SPECIAL FUNCTIONALITY IN E<sup>3</sup>. Revision Management

### Project release

- Assign a new project index
- Update sheet header information

### Modification release

- Assign new project indexes
- Update only changed sheets
- Display modifications against previous version
- Mark recognized modifications in the project
- Generate PDF files for changed sheets
- Generate a multipage TIFF file with graphical comparison
- Generate Excel<sup>®</sup> file with all modifications

### Free comparison

- Compare any two E<sup>3</sup>.series projects

### Configurations

- Customer-specific configurations
- Define sub-project configuration
- Define specific modifications to report on
- Define version and revision sequences
- Multi-lingual support

## E<sup>3</sup>.Revision Management - Change management for E<sup>3</sup>.series designs

### Introduction

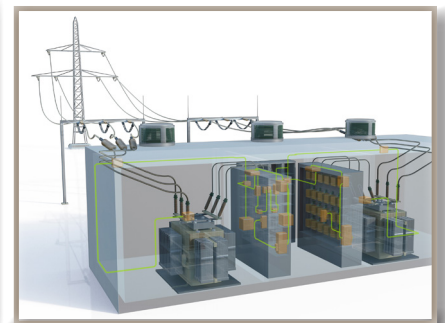
Zuken's E<sup>3</sup>.series is used for documenting and detailing electrical and fluid design projects. Its flexibility supports the entire process from definition and design, through manufacturing and maintenance. Its unique object-oriented architecture ensures all stages of the design are fully synchronized.

E<sup>3</sup>.Revision Management allows users to track changes that occur through all phases of the product lifecycle. E<sup>3</sup>.Revision Management records all graphical and textual changes, keeping a change history. The resulting data can be incorporated into the engineering change process.

Automating change management ensures that no changes are missed, leading to improved quality and increased productivity.

### Supported industries

E<sup>3</sup>.Revision Management supports all industries and works in conjunction with all E<sup>3</sup>.series modules.



## Change configuration

E<sup>3</sup>.series projects contain all elements within the electrical design, including devices, wires, signals, symbols and graphics. Each of these elements may have related attribute details. To limit the amount of change information, the configuration tool in E<sup>3</sup>.Revision Management allows administrators to specify the information that is tracked for change comparisons

## Graphical comparison

In the event of a modification release, all sheets of the E<sup>3</sup>.series project are compared against the previous version. The resultant data is displayed in a multi-sheet TIFF file with colored graphics to denote what has been added, removed and what has remained the same.

## Logical comparison

Not all changes in the project are graphical; therefore all logical and textual changes are documented in a project-specific Excel file. The file shows all changes in columns indicating the original information against the changed data. So changes in device names, wire colors and signal names can all be tracked.

## Change documentation

Documentation produced by E<sup>3</sup>.Revision Management is used in the engineering change order process to help ensure all changes requested by the field or production are implemented in the original design.



## Additional E<sup>3</sup>.series options

### E<sup>3</sup>.schematic

The core module of the E<sup>3</sup>.series suite enables the creation of schematic diagrams for electrical control systems.

### E<sup>3</sup>.cable

Provides enhanced functionality for designing cables and cable harnesses. Different views of the design enable specific documents to be created for production, start-up and service.

### E<sup>3</sup>.formboard

Creates build-to-print detailed 1:1 harness designs; linked dynamically to E<sup>3</sup>.cable drawings.

### E<sup>3</sup>.panel

For general arrangement drawings of cabinet enclosures. Work in either 2D or 3D, place devices, cable ducts and mounting rails and prepare panels for manufacture.

### E<sup>3</sup>.3D Routing Bridge

Transfer wire, cable and cable harness information to 3D MCAD systems. After routing, the individual wire lengths can be transferred back to E<sup>3</sup>.series.

### E<sup>3</sup>.topology

Evaluate system harnesses early in the design flow for factors such as length, weight and cost. Enables tradeoff analysis of harnesses and sub-harnesses to optimize manufacturing performance and cost.

### E<sup>3</sup>.redliner

Markup documents in a protected read-only copy of the design. Playback and jump to all recommended changes in the master design.

### E<sup>3</sup>.view

View all E<sup>3</sup>.series projects and special viewer files with this free-of-charge viewer.